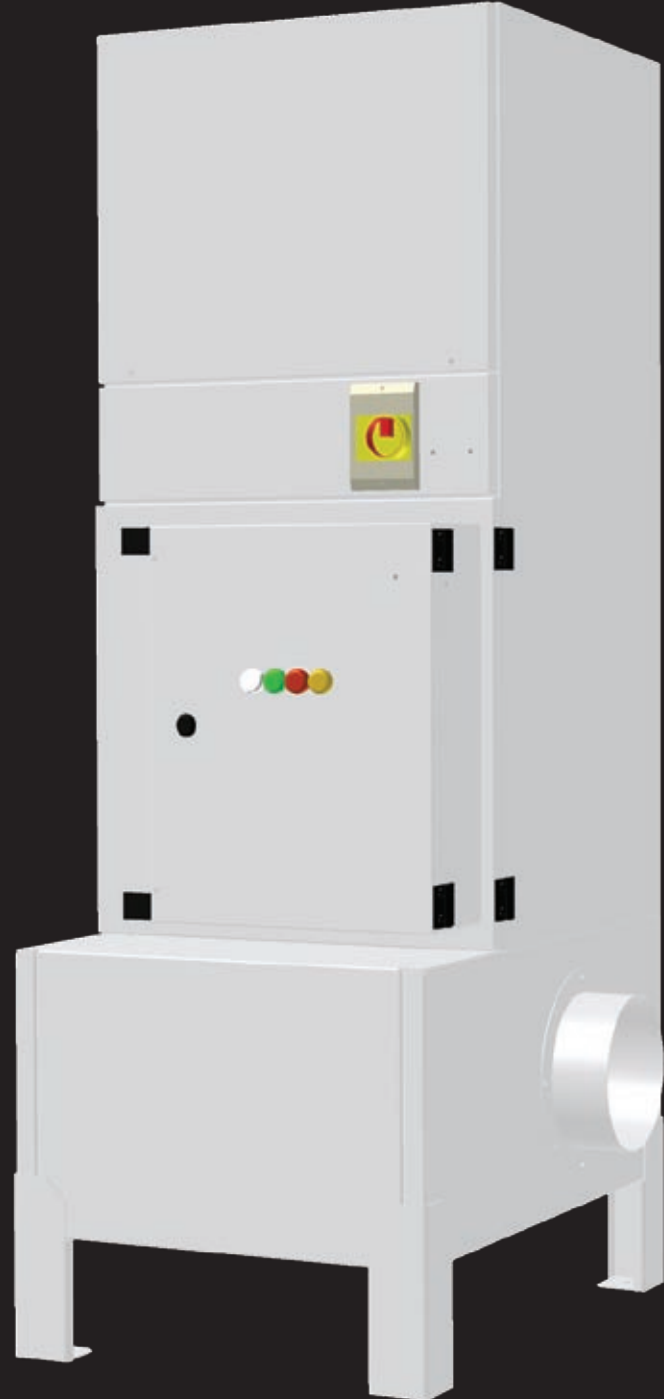


**ELECTROSTATIC  
FILTER 1500v**



The acs 1500v is designed for direct attachment to most machines and machining centres or multiple extraction from smaller machines.



**Power supply**  
 High voltage power supply providing 10000v to the ioniser and 5000v to the collector cell

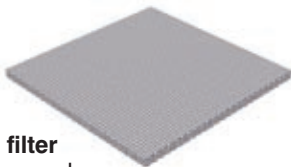
**Isolator**  
 Isolator for start/stop and mains isolation



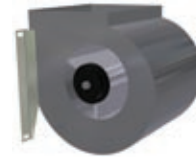
**Collector cell**  
 High efficiency collector cell constructed from aluminium and steel components with 'dead' spring cut out



**Ioniser**  
 Ioniser constructed from aluminium and steel components with 10 wires or stainless steel 'spikes'



**Pre/after filter**  
 Aluminium mesh pre/after filters



**Fan**  
 Forward curve centrifugal fan



**Motor**  
 IP54 metric frame motor (0.75-1.5Kw) (400/230v 50/60Hz 3pH)

**Deflector - inlet**  
 Inlet deflector to remove large particulate and prevent swarf entering the pre-filter



**Inlet spigot**  
 Inlet spigot for galvanised or flexible duct work connections

**Oil drain**  
 1/2" BSP drain connector to return collected condensate to machine tool sump or collection bin for disposal

## TECHNICAL DATA

Air Volume (max)	1500cfm/2500m <sup>3</sup> h
Motor rating	0.75-1.5Kw
Supply	400/230v 50/60Hz 3pH
Weight	140Kg

## FINISH

- RAL 7035
- Wide range of other colours available
- Built to CE Standards

## DIMENSIONS

